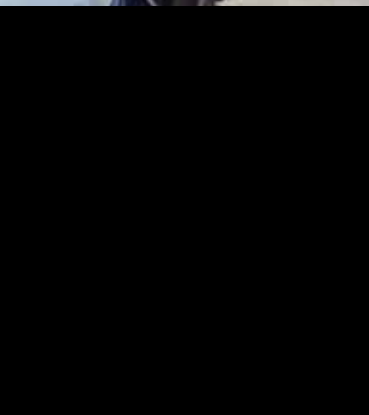




Additional information





- 86 Shareholders' diary
- 86 Shareholders' analysis
- 88 Bondholders' analysis
- 89 Abbreviations and definitions
- 91 Corporate information



Shareholders' diary

Notice of AGM posted to shareholders	27 October 2017
Annual Financial Statements published and available on website	27 October 2017
2017 Integrated Report published and available on website	27 October 2017
Annual General Meeting	28 November 2017
Interim results for the six months ending 31 December 2017	February 2018
Final results for the year ending 30 June 2018	August 2018

Shareholders' analysis

	Number of shareholdings	% of total shareholdings	Number of shares	% of issued capital
SHAREHOLDER SPREAD				
1 – 1 000	3 702	49.90	1 229 982	0.34
1 001 – 10 000	2 581	34.79	8 468 922	2.36
10 001 – 100 000	770	10.38	26 165 072	7.29
100 001 – 1 000 000	313	4.22	87 642 915	24.41
Over 1 000 000	53	0.71	235 578 543	65.61
Total	7 419	100.00	359 085 434	100.00
DISTRIBUTION OF SHAREHOLDERS				
Assurance Companies	37	0.50	6 557 777	1.83
Close Corporations	69	0.93	541 914	0.15
Collective Investment Schemes	313	4.22	155 637 687	43.34
Control Accounts	2	0.03	76	0.00
Custodians	24	0.32	14 172 406	3.95
Foundations and Charitable Funds	37	0.50	2 797 388	0.78
Hedge Funds	20	0.27	2 716 435	0.76
Insurance Companies	6	0.08	905 534	0.25
Investment Partnerships	42	0.57	598 020	0.17
Managed Funds	40	0.54	8 995 522	2.51
Medical Aid Funds	18	0.24	1 179 178	0.33
Organs of State	10	0.13	65 304 431	18.19
Private Companies	180	2.43	5 511 363	1.53
Public Companies	5	0.07	438 736	0.12
Public Entities	3	0.04	215 832	0.06
Retail Shareholders	5 722	77.13	15 102 833	4.21
Retirement Benefit Funds	297	4.00	49 927 890	13.90
Scrip Lending	9	0.12	1 629 090	0.45
SG Tsogo Empowerment Trust	1	0.01	90 964	0.03
Share Scheme	1	0.01	9 781 816	2.72
Sovereign Funds	6	0.08	9 352 911	2.60
Stockbrokers and Nominees	24	0.32	1 450 661	0.40
Trusts	547	7.37	6 176 133	1.72
Unclaimed Scrip	6	0.08	837	0.00
Total	7 419	100.00	359 085 434	100.00

	Number of shareholdings	% of total shareholdings	Number of shares	% of issued capital
SHAREHOLDER TYPE				
Non-public shareholders				
Directors and associates of the company	5	0.07	64 666 055	18.01
Own holdings	1	0.01	96 992	0.03
SG Tsogo Empowerment Trust	1	0.01	289 949	0.08
Share Scheme	1	0.01	90 964	0.03
Public Investment Corporation (GEPF)	1	0.01	9 781 816	2.72
	1	0.01	54 406 334	15.15
Public shareholders	7 414	99.93	294 419 379	81.99
Total	7 419	100.00	359 085 434	100.00

FUND MANAGERS WITH A HOLDING GREATER THAN 3% OF THE ISSUED SHARES

Allan Gray			82 338 158	22.93
Public Investment Corporation			56 964 368	15.86
Visio Capital Management			26 713 949	7.44
PSG Asset Management			22 555 807	6.28
Prudential Investment Managers			20 546 214	5.72
Dimensional Fund Advisors			20 050 778	5.58
Total			229 169 274	63.82

BENEFICIAL SHAREHOLDERS WITH A HOLDING GREATER THAN 3% OF THE ISSUED SHARES

Public Investment Corporation (GEPF)			62 521 734	17.41
Allan Gray			48 875 667	13.61
PSG Asset Management			21 197 987	5.90
Dimensional Fund Advisors			15 400 033	4.29
Alexander Forbes Investments			13 836 620	3.85
Prudential Investment Managers			10 773 975	3.00
Total			172 606 016	48.07

Non-public breakdown of the 359 085 434 shares at 30 June 2017

	Count	Holding	%
BENEFICIAL HOLDERS > 10%			
Government Employees Pension Fund	1	54 406 334	15.15
SHARE SCHEMES			
Super Group Share Incentive Scheme and SG Tsogo Empowerment Trust	2	9 872 780	2.75
OWN HOLDINGS			
Super Group Trading (Pty) Ltd	1	289 949	0.08
DIRECTORS AND ASSOCIATES			
Mr N Redford	1	96 992	0.03

Bondholders' analysis

On 30 June 2017, Super Group has issued R675 million of its R2 billion authorised DMTN programme. R471 million matured on 31 October 2016, with two issuances totalling R204 million listed on 9 September 2016 and 31 October 2016, respectively. The bondholders as at 30 June 2017 were:

	Number of bondholdings	% of Total bondholdings	Bonds held	% Held
BONDHOLDER SPREAD				
50 000 - 1 000 000 Bonds	38	64.41	14 100 000	6.91
1 000 001 Bonds and over	21	35.59	189 900 000	93.09
Total	59	100.00	204 000 000	100.00
DISTRIBUTION OF BONDHOLDERS				
Assurance Companies	1	1.69	20 000 000	9.80
Collective Investment Schemes	21	35.59	131 000 000	64.22
Foundations & Charitable Funds	8	13.56	3 650 000	1.79
Insurance Companies	2	3.39	21 800 000	10.69
Managed Funds	1	1.69	200 000	0.10
Retirement Benefit Funds	24	40.68	27 000 000	13.24
Trusts	2	3.39	350 000	0.17
Total	59	100.00	204 000 000	100.00
BONDHOLDER TYPE				
Non-public bondholders	1	1.69	59 900 000	29.36
Allan Gray	1	1.69	59 900 000	29.36
Public bondholders	58	98.31	144 100 000	70.64
Total	59	100.00	204 000 000	100.00
INVESTMENT MANAGER SHAREHOLDINGS (>3%)				
Allan Gray			120 500 000	59.07
Mergence Africa Investments			18 000 000	8.82
Northstar Asset Management			19 000 000	9.31
Total			157 500 000	77.20
BENEFICIAL BONDHOLDINGS (>3%)				
Allan Gray			97 350 000	47.72
Regent			40 000 000	19.61
Northstar Asset Management			19 000 000	9.31
Investment Solutions			11 550 000	5.66
Amplats			6 600 000	3.24
Total			174 500 000	85.54
BENEFICIAL HOLDING BY REGION				
South Africa			203 750 000	99.88
Namibia			200 000	0.10
Swaziland			50 000	0.02
Total			204 000 000	100.00

Abbreviations and definitions

The following abbreviations and definitions listed below have been used throughout this Integrated Report.

"Ader"	Servicios Empresariales Ader S.A
"AGM"	Annual General Meeting
"AUD"	Australian Dollar
"Basic EPS"	Earnings for the year attributable to equity holders of Super Group divided by the weighted average number of ordinary shares in issue during the year
"B-BBEE"	Broad-Based Black Economic Empowerment
"BEE"	Black Economic Empowerment
"CAGR"	Compound Annual Growth Rate
"CEO"	Chief Executive Officer
"CFO"	Chief Financial Officer
"CIO"	Chief Information Officer
"CIPC"	Companies and Intellectual Property Commission
"CJD"	Chrysler, Jeep, Dodge
"Closing earnings yield"	Headline earnings per share as a percentage of market value per share at 30 June
"Closing PE ratio"	Market value per share at 30 June divided by headline earnings per share
"Companies Act"	Companies Act No. 71 of 2008, as amended
"Core earnings"	Excludes the after tax and NCI material non-operational items such as business acquisition-related costs, B-BBEE-related expenses and the amortisation of PPA intangible assets
"CSI"	Corporate Social Investment
"DMTN"	Domestic Medium Term Notes
"EAG" or "Essex Auto Group"	Essex Auto Group Limited
"Earnings yield"	HEPS as a percentage of market value per share
"EBIT"	Earnings before interest and taxation
"EBITA"	Earnings before interest, taxation and amortisation
"EBITDA"	Earnings before interest, taxation, depreciation and amortisation
"ECD"	Early Childhood Development
"EPS"	Earnings per share
"EU"	European Union
"EUR/€"	Euro
"Exco"	Executive Committee
"Fleet Hire"	Fleet Hire Holdings Limited
"FMCG"	Fast Moving Consumer Goods
"FML"	Full Maintenance Leasing
"GBP/£"	Great British Pound
"GDP"	Gross Domestic Product
"Gearing"	Interest-bearing borrowings less cash and cash equivalents as a ratio to total equity
"GRMC"	Group Risk Management Committee
"HEPS"	Headline earnings divided by the weighted average number of ordinary shares in issue during the year

Abbreviations and definitions

> continued

"IAS"	International Accounting Standards
"IFRS"	International Financial Reporting Standards
"IT"	Information Technology
"JIBAR"	Johannesburg Interbank Agreed Rate
"JSE"	JSE Limited
"King IV"	The King Code of Corporate Governance Principles and the King Report on Governance for South Africa 2016
"KPI"	Key Performance Indicators
"Legend"	ABF Legend Logistics Proprietary Limited
"Listings Requirements"	Listings Requirements of the JSE
"Motiva"	Motiva Group Limited
"NAAMSA"	National Association of Automobile Manufacturers of South Africa
"NAV"	Net asset value
"NCI"	Non-controlling interests
"Net operating assets"	Total assets excluding cash and cash equivalents, deferred tax assets, equity accounted investees and interest-bearing receivables less total liabilities excluding bank overdrafts, interest-bearing borrowings, FML borrowings, deferred tax liabilities, interest-bearing payables and income tax payable
"OEM"	Original Equipment Manufacturer
"Operating profit margin"	EBIT as a percentage of revenue
"PE"	Price earnings, market value per share divided by HEPS
"PPA"	Purchase Price Allocation
"QSR"	Quick Service Restaurant
"R"	Rand, the South African currency
"Remco"	Remuneration Committee
"Return on equity"	Profit attributable to equity holders of Super Group as a percentage of average capital and reserves attributable to equity holders of Super Group
"Return on total assets"	EBIT as a percentage of average total assets
"RNOA"	Return on net operating assets, calculation being EBIT after tax as a percentage of average net operating assets
"SA"	South Africa
"SARS"	Share Appreciation Rights Scheme
"SENS"	Stock Exchange News Service
"SG Fleet"	SG Fleet Group Limited
"SMC" or "Slough Motor Corporation"	Slough Motor Company Limited, held by Bestodeck Limited
"Strate"	Strate Limited
"Super Group" or "the Group"	Super Group Limited and its subsidiaries
"the Board"	the Board of directors of Super Group
"the company"	Super Group Limited
"UK"	United Kingdom
"WACC"	Weighted Average Cost of Capital

Corporate information

Registration number	1943/016107/06
ISIN	ZAE000161832
Share code	SPG
ISIN for DMTN programme	ZAE00011334
Share code for DMTN programme	SPG002 and SPG003
Registered office	27 Impala Road, Chislehurst, Sandton, 2196
Postal address	Private Bag X9973, Sandton, 2146
Telephone number	+27 (0)11 523 4000
Facsimile	+27 (0)11 523 4858
Company Secretary	Nigel Redford
Telephone number	+27 (0)11 523 4000
Email	nigel.redford@supergrp.com
Auditors	KPMG Inc. (Registration number 1999/021543/21) KPMG Crescent, 85 Empire Road, Parktown, 2193 (Private Bag 9, Parkview, 2122)
Attorneys	Fluxmans Inc. (Registration number 2000/024775/21) 30 Jellicoe Avenue, Rosebank, 2196 (Private Bag X41, Saxonwold, 2132)
Transfer Secretaries	Computershare Investor Services Proprietary Limited (Registration number 2004/003647/07) Rosebank Towers, 15 Bierman Avenue, Rosebank, 2196 (PO Box 61051, Marshalltown, 2107)
Sponsor	Deutsche Securities (SA) Proprietary Limited (Registration number 1995/011798/07) 3 Exchange Square, 87 Maude Street, Sandton, 2196 (Private Bag X9933, Sandton, 2146)
Investor Relations	Keyter Rech Investor Solutions CC (Registration number 2008/156985/23) Fountain Grove, 5 2nd Street, Hyde Park, 2195 (PO Box 653078, Benmore, 2010)
Bankers	Absa Bank Limited Barclays Bank PLC Commonwealth Bank of Australia Limited First National Bank, a division of FirstRand Bank Limited HSBC Holdings PLC Investec Limited Nedbank Limited Rand Merchant Bank, a division of FirstRand Bank Limited Standard Bank of South Africa Limited St George Bank Limited The Royal Bank of Scotland plc